



An Roinn Comhshaoil,
Aeráide agus Cumarsáide
Department of the Environment,
Climate and Communications

Lessons learnt from Foreshore Applications for ORE Site Investigation Surveys

Yvonne Leahy, Ph.D.

25th October 2024



**An Roinn Comhshaoil,
Aeráide agus Cumarsáide**
Department of the Environment,
Climate and Communications

Outline of Talk

- The Process
- The Project
- Worked Example
- Habitats and Species – what is being protected
- Expertise



**An Roinn Comhshaoil,
Aeráide agus Cumarsáide**
Department of the Environment,
Climate and Communications



Brussels, 28.9.2021
C(2021) 6913 final
PART 2/2

Commission notice

Assessment of plans and projects in relation to Natura 2000 sites - Methodological guidance on Article 6(3) and (4) of the Habitats Directive 92/43/EEC

Managing Natura 2000 sites

The provisions of Article 6 of the 'Habitats' Directive 92/43/EEC



EN

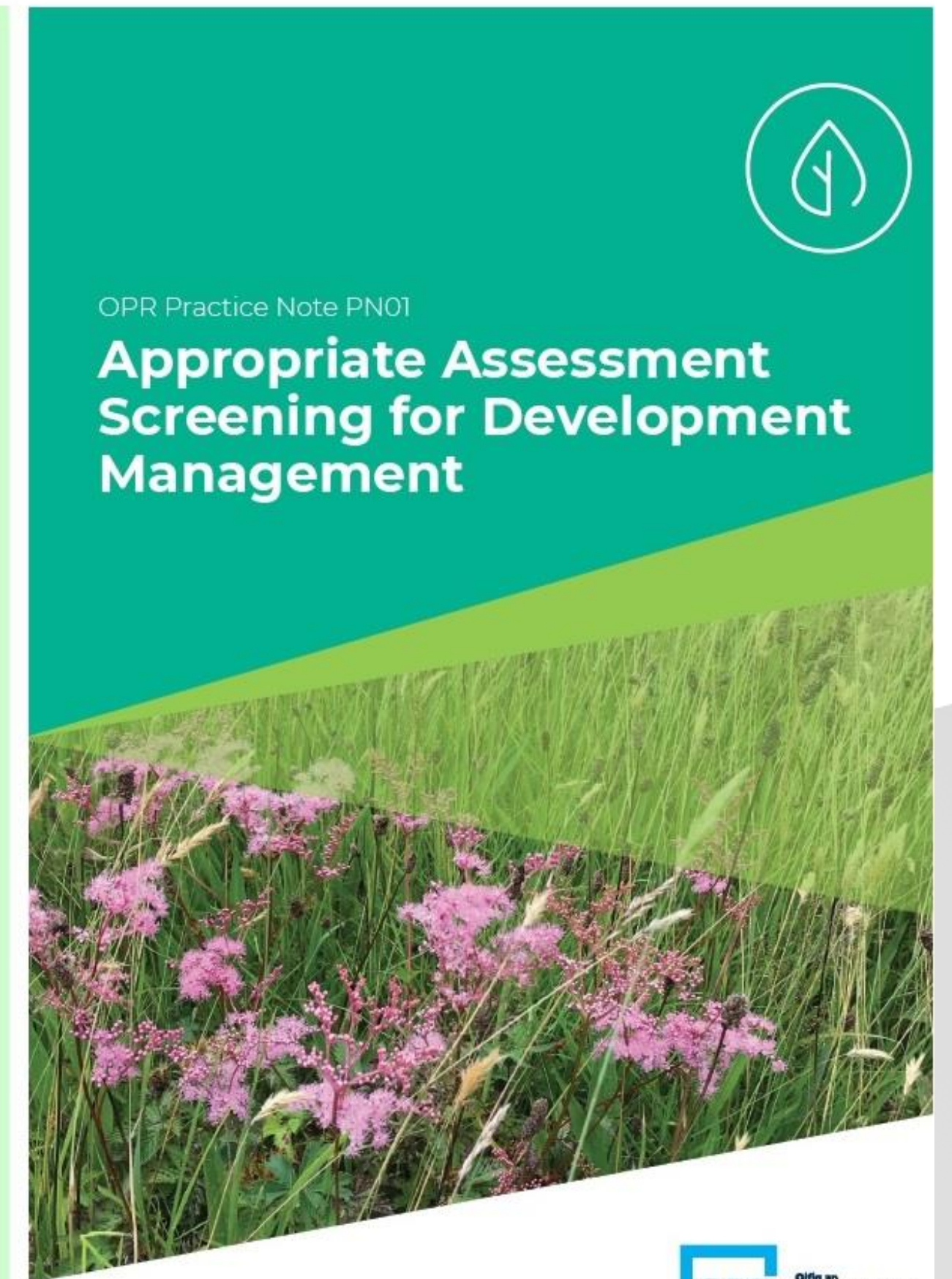
The Process

**Appropriate Assessment of
Plans and Projects in
Ireland**
**Guidance for Planning
Authorities**



Comhshaoil, Oidhreacht agus Rialtas Áitiúil
Environment, Heritage and Local Government

EN



OPR Practice Note PN01

**Appropriate Assessment
Screening for Development
Management**

March 2021





An Roinn Comhshaoil,
Aeráide agus Cumarsáide
Department of the Environment,
Climate and Communications

The Process

- Consistency of language through documents

Test at Screening Stage “**likely significant effects**”

Test at Appropriate Assessment Stage “**adversely affect**”

Screening Test An Appropriate Assessment is/is not required as the project, individually or in combination with other plans or projects, is/is not **likely to have significant effects** on any European site.

Appropriate Assessment Test The proposed project, either alone or in-combination with other projects, will/will not **adversely affect** the integrity of any European Site.



**An Roinn Comhshaoil,
Aeráide agus Cumarsáide**
Department of the Environment,
Climate and Communications

The Plan

- *Consider all the aspects of the plan*
- *Why is it being understood?*
- *How long will it take?*



An Roinn Comhshaoil,
Aeráide agus Cumarsáide
Department of the Environment,
Climate and Communications

The Plan

Reasoned Argument

- *General environment*
- *Possible pressures*
- *Qualifying Interests vulnerable to those pressures*
- *Source – Pathway – Receptor Model*



**An Roinn Comhshaoil,
Aeráide agus Cumarsáide**
Department of the Environment,
Climate and Communications

Worked Example



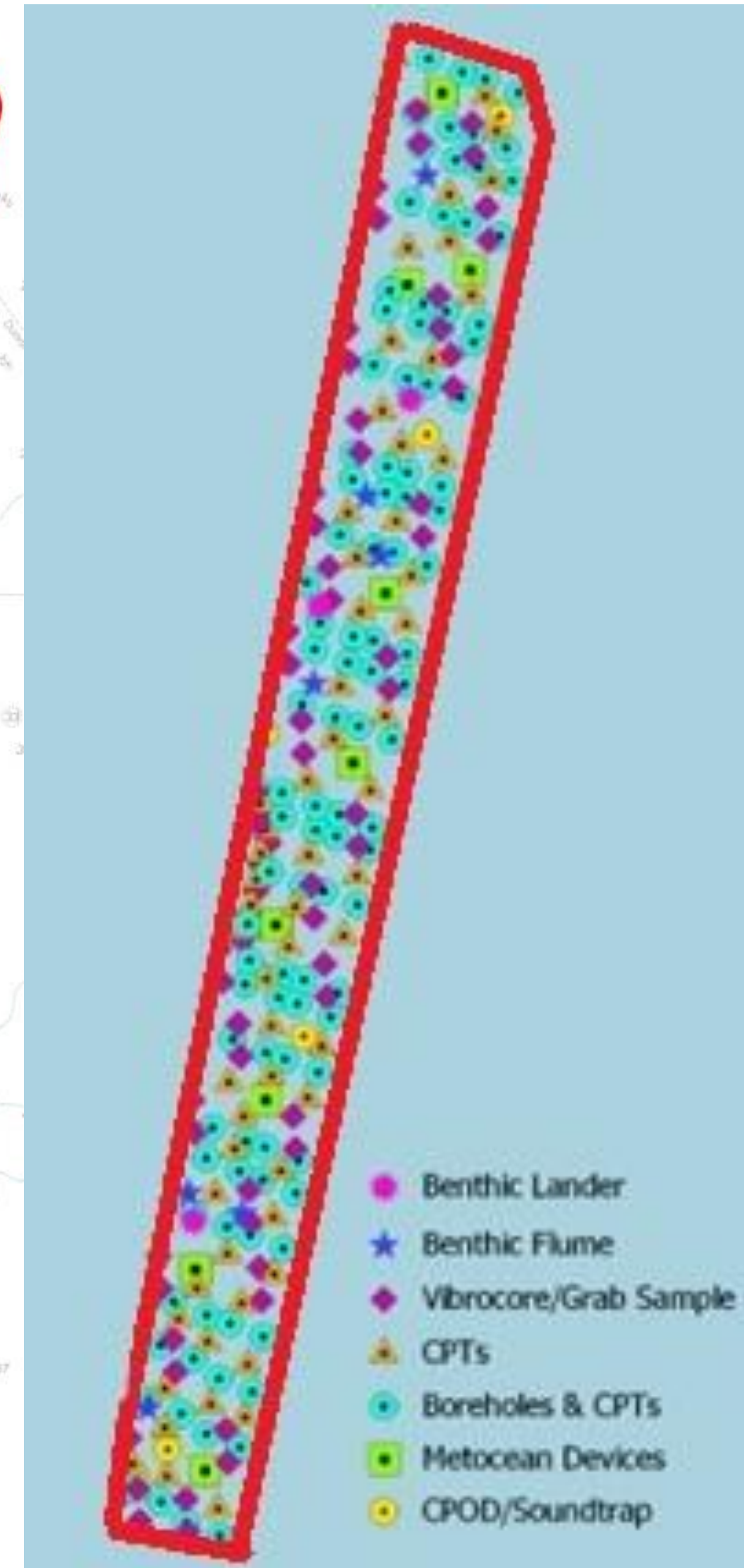
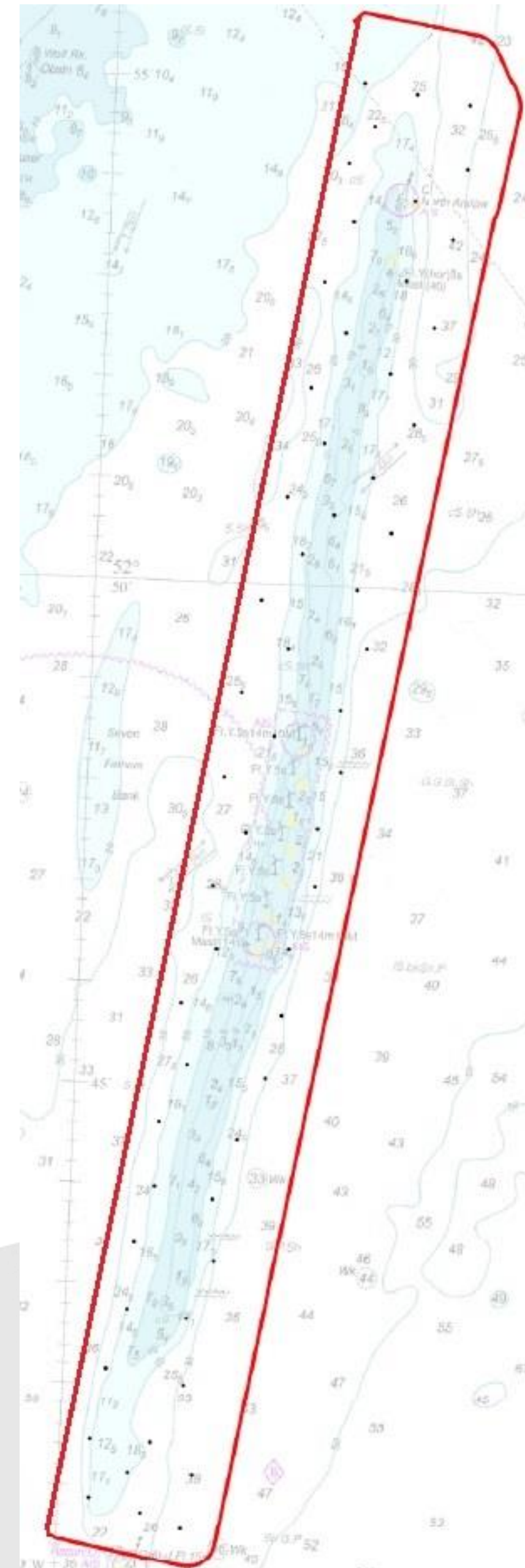
An Roinn Comhshaoil,
Aeráide agus Cumarsáide
Department of the Environment,
Climate and Communications

Borehole diameter is

143mm

Boreholes are 0.7km to 1.7km apart

- * Borehole/CPT sampling points are for the purpose of showing locations only and are **not to scale or representative of the actual dimensions of a borehole**.
- * Borehole/CPT sampling points are shown at approximately **70m and 20m diameter** in figures 3 and 4 respectively, for visual purposes.
- * The true diameter of the boreholes is **143mm** and therefore **not visible at the scale**.
- * Sampling will be completed in a systematic sequence, **one borehole of 143mm diameter at any one time**, working from North to South or South to North within the FLA where practically possible and weather dependant.
- * Minimum distance between borehole/CPT sampling points is **0.7km**. Maximum distance between borehole/CPT sampling points is **1.7km**.





**An Roinn Comhshaoil,
Aeráide agus Cumarsáide**
Department of the Environment,
Climate and Communications

	J	F	M	A	M	J	J	A	S	O	N	D	Number of Days	Max No. of locations
YEAR 1														
Geophysical Survey													74	Array Area
Grab Sampling Survey													26	40
YEAR 2														
Array Area Completion Ground Investigation – Borehole Campaign													162	56
Export Cable Completion Ground Investigation – Vibro Core & Shallow CPT Campaign													20	36
YEAR 3/4														
Geophysical Surveys													49	Array Area Export Cable
Potential Additional Bore Holes													68	10 per year



**An Roinn Comhshaoil,
Aeráide agus Cumarsáide**
Department of the Environment,
Climate and Communications

What is protected ?



An Roinn Comhshaoil,
Aeráide agus Cumarsáide
Department of the Environment,
Climate and Communications

Habitats Directive

Annex I Habitats

- 1110 Sandbanks
- 1130 Estuaries
- 1140 Mudflats & sandflats
- 1160 Inlets & Bays
- 1170 Reefs
- 1180 Leaking Gas Structures
- 8330 Sea Caves

Coastal Habitats

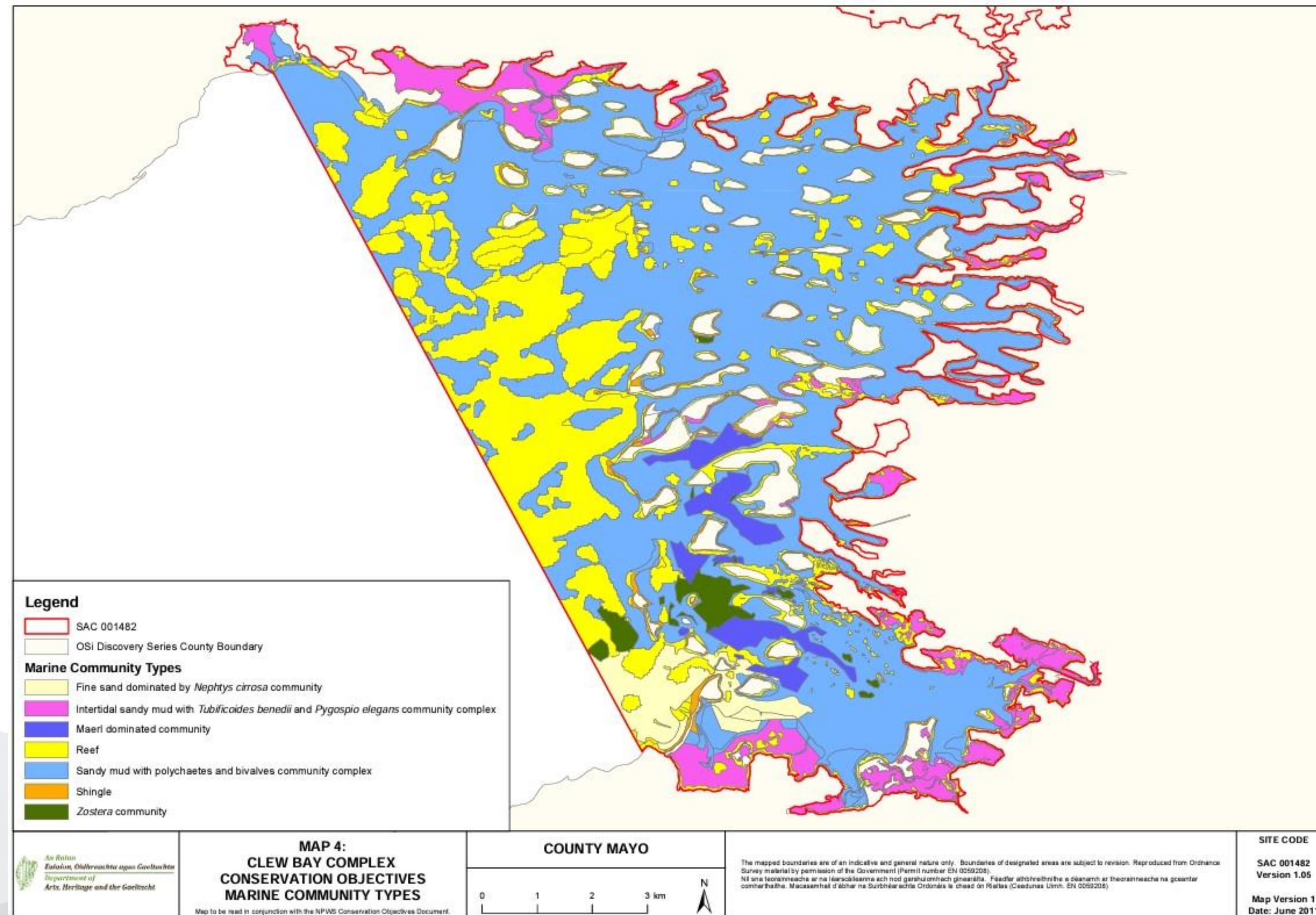
- Dunes
- Saltmarsh





An Roinn Comhshaoil,
Aeráide agus Cumarsáide
Department of the Environment,
Climate and Communications

Habitats Directive





An Roinn Comhshaoil,
Aeráide agus Cumarsáide
Department of the Environment,
Climate and Communications

Habitats Directive

Annex II Species

Marine Mammals

- Grey & Harbour Seals
- Harbour Porpoise
- Bottlenose Dolphin
- Otter



Annex IV Species

Marine Mammals

- All cetacean
- Leatherback Turtle
- Otter
- Bats



Leatherback turtle - P.G.H. Evans/SWF



An Roinn Comhshaoil,
Aeráide agus Cumarsáide
Department of the Environment,
Climate and Communications

Habitats Directive

Conservation Objectives for : Blasket Islands SAC [002172]

1364 Grey seal *Halichoerus grypus*

To maintain the favourable conservation condition of Grey Seal in Blasket Islands SAC, which is defined by the following list of attributes and targets:

Attribute	Measure	Target	Notes
Access to suitable habitat	Number of artificial barriers	Species range within the site should not be restricted by artificial barriers to site use. See map 9	See marine supporting document for further details
Breeding behaviour	Breeding sites	Conserve the breeding sites in a natural condition. See map 9 for known sites	Attribute and target based on background knowledge of Irish breeding populations, comprehensive breeding surveys in 1996 (Kiely, 1998; Kiely and Myers, 1998), 2003 (Cronin and Ó Cadhla, 2004; Cronin et al., 2007), and 2005 (Ó Cadhla et al., 2008) and 2011 (Ó Cadhla et al., 2013) and unpublished NPWS records including those reported by Lyons (2004). See marine supporting document for further details
Moulting behaviour	Moult haul-out sites	Conserve the moult haul-out sites in a natural condition. See map 9 for known sites	Attribute and target based on background knowledge of Irish populations, on review of data from Kiely (1998) and Lyons (2004), a national moult survey (Ó Cadhla and Strong, 2007) and unpublished NPWS records. See marine supporting document for further details
Resting behaviour	Resting haul-out sites	Maintain the resting haul-out sites in a natural condition. See map 9 for known sites	Attribute and target based on review of data from Kiely (1998), Lyons (2004), Cronin et al. (2004), Ó Cadhla et al. (2008), Duck and Morris (2013) and unpublished NPWS records. See marine supporting document for further details
<u>Disturbance</u>	Level of impact	Human activities should occur at levels that do not adversely affect the grey seal population <u>at the site</u>	See marine supporting document for further details

Conservation Objectives for : Blasket Islands SAC [002172]

1351 Harbour porpoise *Phocoena phocoena*

To maintain the favourable conservation condition of Harbour Porpoise in Blasket Islands SAC, which is defined by the following list of attributes and targets:

Attribute	Measure	Target	Notes
Access to suitable habitat	Number of artificial barriers	Species range within the site should not be restricted by artificial barriers to site use. See map 8	See marine supporting document for further details
<u>Disturbance</u>	Level of impact	Human activities should occur at levels that do not adversely affect the harbour porpoise community <u>at the site</u>	See marine supporting document for further details



An Roinn Comhshaoil,
Aeráide agus Cumarsáide
Department of the Environment,
Climate and Communications

Birds Directive

Threatened and endangered species, including migratory species.

Wetland species - Breeding Seabirds & Overwintering birds

Foraging Resource.



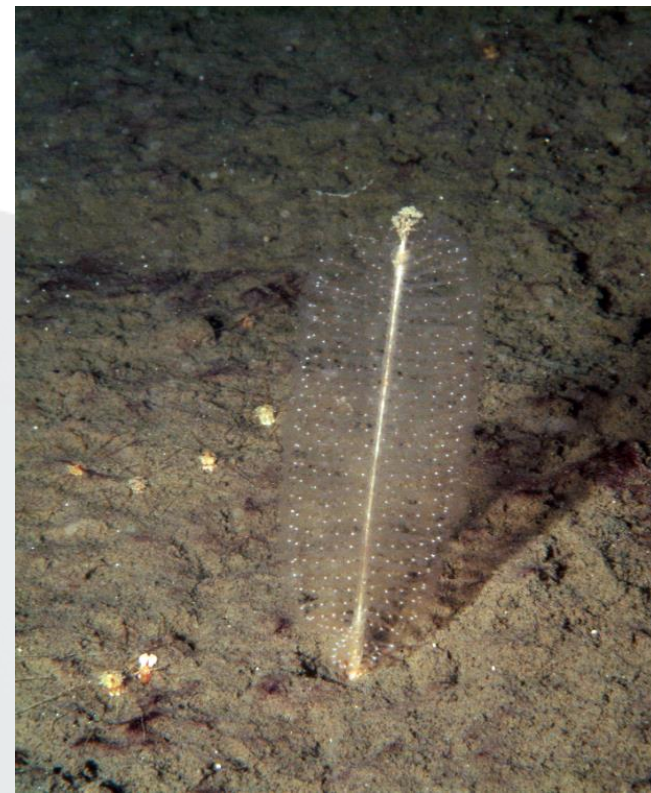
OSPAR Habitats



An Roinn Comhshaoil,
Aeráide agus Cumarsáide
Department of the Environment,
Climate and Communications

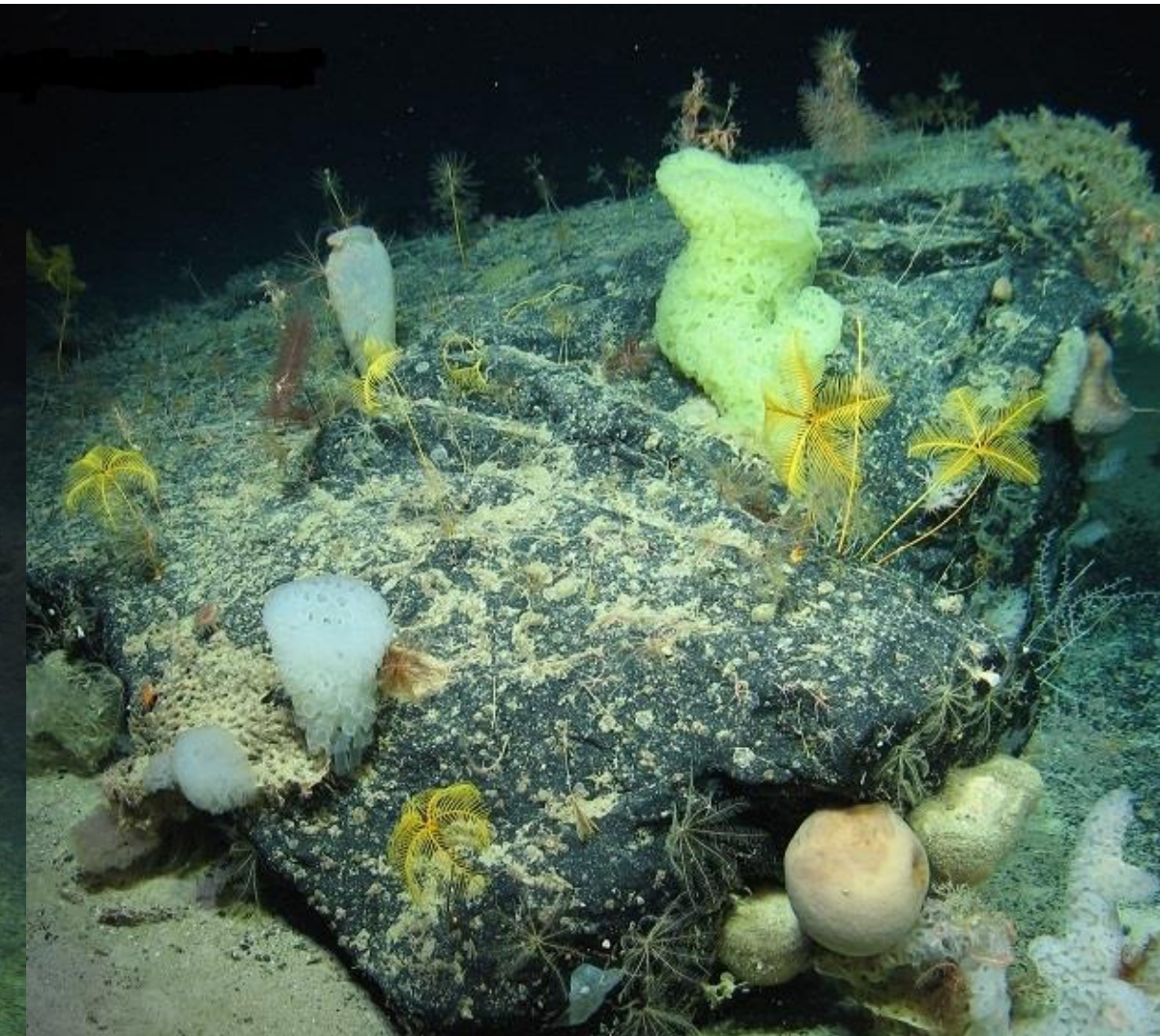
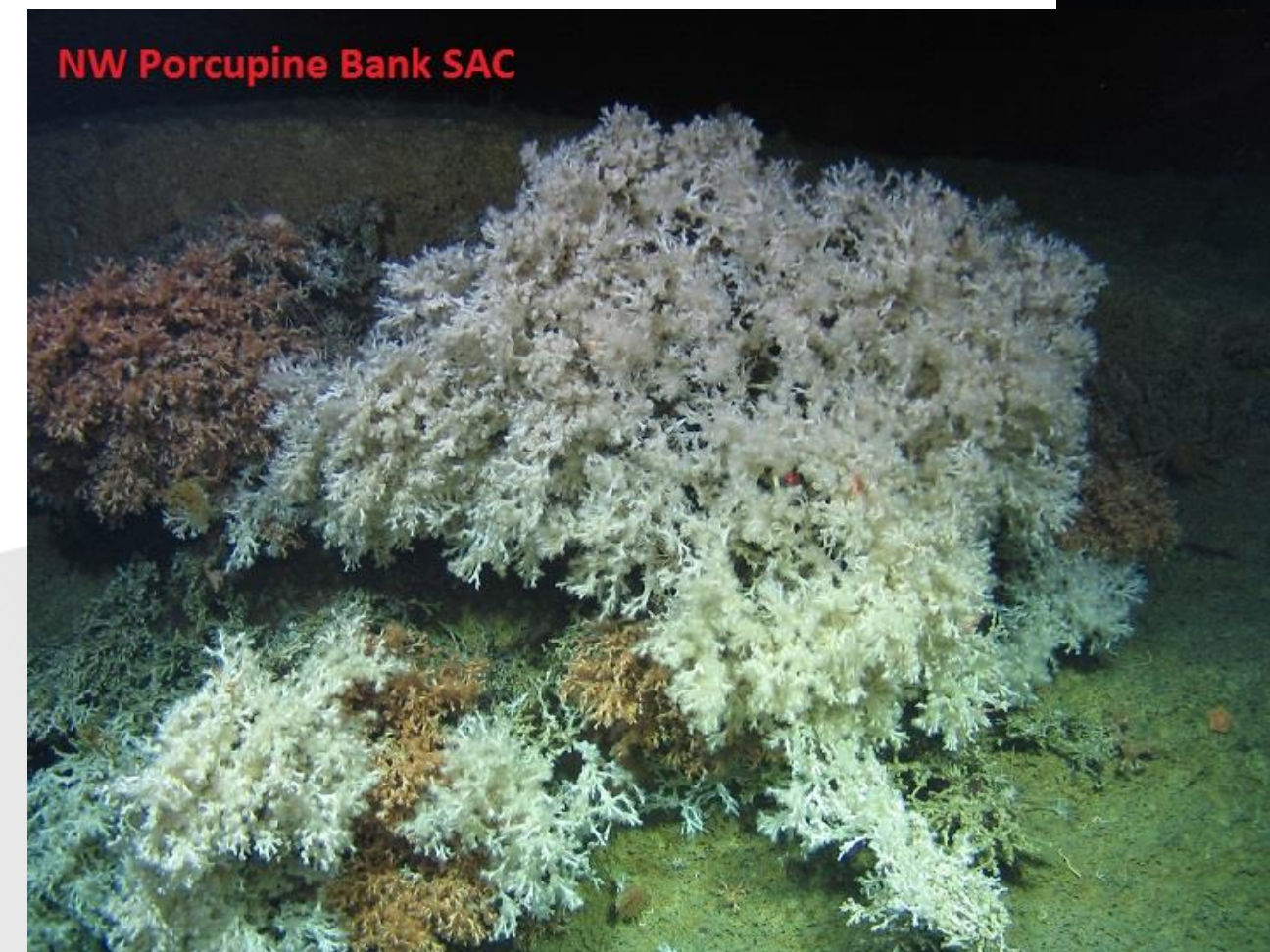
Shallow Coastal

- Intertidal *Mytilus edulis* beds
- Intertidal mudflats
- Kelp forest
- Maerl beds
- Zostera* beds
- Ostrea edulis* beds
- Sabellaria spinulosa* reefs
- Seapen and burrowing megafauna
- Modiolus modiolus* beds



Deep water Offshore

- Carbonate mounds
- Coral gardens
- Deep sea sponge aggregations
- Lophelia pertusa* reefs
- Oceanic ridges with hydrothermal vents
- Seamounts





**An Roinn Comhshaoil,
Aeráide agus Cumarsáide**
Department of the Environment,
Climate and Communications

OSPAR Species

Balearic shearwater

Black-legged kittiwake

Roseate tern

Allis shad

Angel shark

Basking shark

Cod

Common Skate

European eel

Portuguese dogfish

Salmon

Sea Lamprey

Leafscale gulper shark

Long-snouted seahorse

Porbeagle

Spotted Ray

[Northeast Atlantic] spurdog

White skate

Ostrea edulis

Arctica Islandica

Whales - Bowhead whale Blue Whale Harbour

Porpoise & Northern Right Whale

Sea Turtles - Leatherback & Loggerhead



**An Roinn Comhshaoil,
Aeráide agus Cumarsáide**
Department of the Environment,
Climate and Communications

EXPERTISE